

Madison, Wisconsin

# CITY OF MADISON

## CITY ENGINEERING DIVISION

### DEPARTMENT OF PUBLIC WORKS

# PLAN OF PROPOSED IMPROVEMENT

**INDEX OF SHEETS**

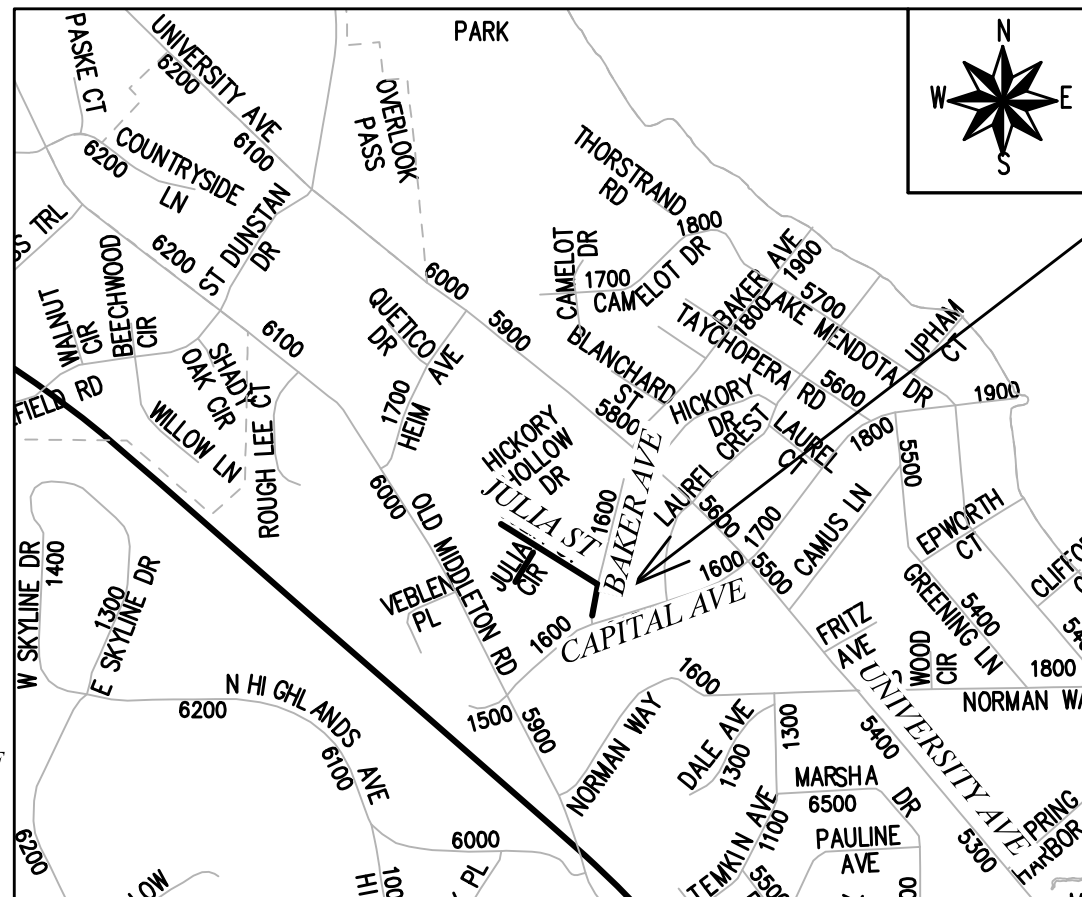
SHEET NO.	DETAILS
D1	DETAILS
E1-E3	EROSION CONTROL PLANS
P1-P3	PLAN & PROFILES
U1-U3	UTILITY PLAN AND PROFILE
U4	SANITARY SCHEDULE
U5-U6	STORM SEWER SCHEDULE
X1-X2	CROSS SECTION

## JULIA STREET, JULIA CIRCLE AND BAKER AVENUE RESURFACING ASSESSMENT DISTRICT - 2020

CITY PROJECT NO. 12717  
CONTRACT NO. 8514

**CONVENTIONAL SIGNS**  
FIELD VERIFY ALL UTILITY LOCATIONS

GAS	— G —
STORM SEWER	— ST —
SANITARY SEWER	— SAN —
WATER	— W —
BURIED ELECTRIC	— E —
OVERHEAD ELECTRIC	— OH —
POWER POLE	
ADA COMPLIANT RAMP W/ DETECTABLE WARNING FIELD	
COMBUSTIBLE FLUIDS	



PROJECT  
LOCATION

PLOT SCALE: 1" = 1'

REV. DATE: 5/11/2020 8:43 AM

ORIGINATOR: CITY OF MADISON

NOTES:  
ALL GUTTERS SHALL DRAIN WITH A MINIMUM GRADE OF 0.50% TOWARD STORM SEWER INLETS.

**EARTH WORK SUMMARY:**

EXCAVATION CUT (MEASURED PLAN QUANTITY) = 435.00 C.Y.  
ESTIMATED UNDISTRIBUTED UNDERCUT = 195.00 C.Y.  
TOTAL UNCLASSIFIED EXCAVATION CUT = 630.00 C.Y.

FILE NAME: M:\DESIGN\Projects\12717\CAD\Plan Sheets\Julia\_Baker\_TitleSht.dwg

DATE: 5/8/2020 8:15 AM

PUBLIC IMPROVEMENT PROJECT  
APPROVED

APPROVED DATE: MAY 5, 2020

BY THE COMMON COUNCIL  
OF MADISON, WISCONSIN

PUBLIC IMPROVEMENT DESIGN  
APPROVED BY:

*Greg Fries*

May 8, 2020

City Engineer

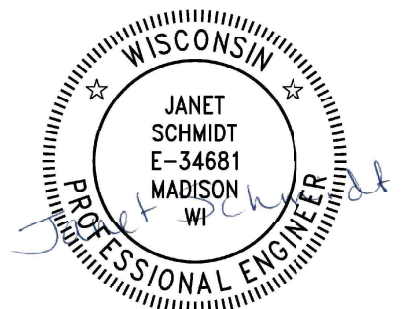
Date

STREET  
DESIGNED BY:



May 8, 2020

STORM SEWER  
DESIGNED BY:



May 8, 2020

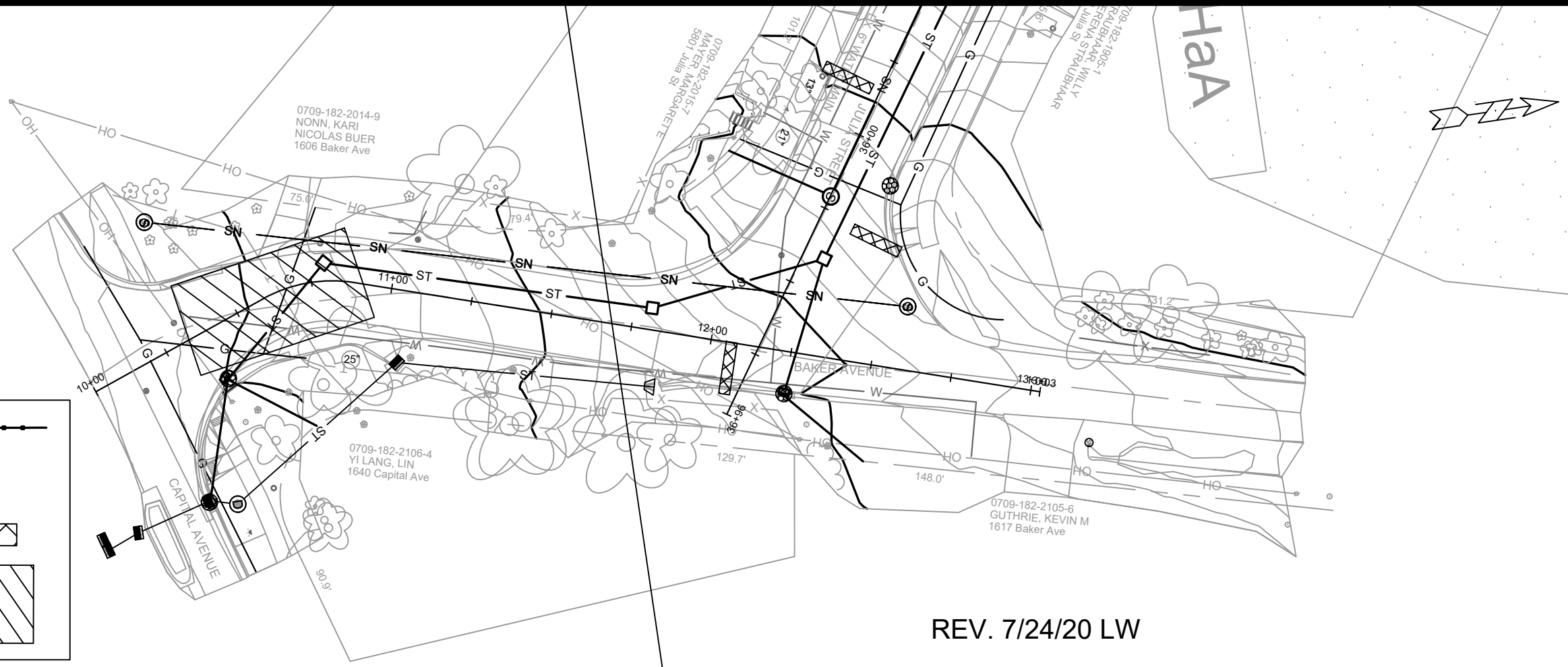
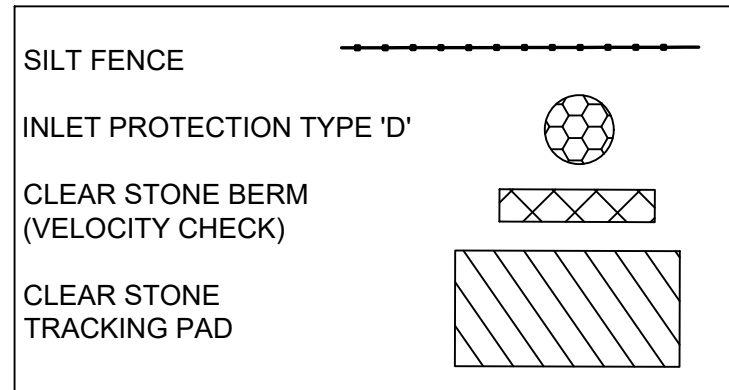
SANITARY SEWER  
DESIGNED BY:



May 8, 2020

Revised Plan Issued 9/18/2020





REV. 7/24/20 LW

**EROSION CONTROL NOTES:**

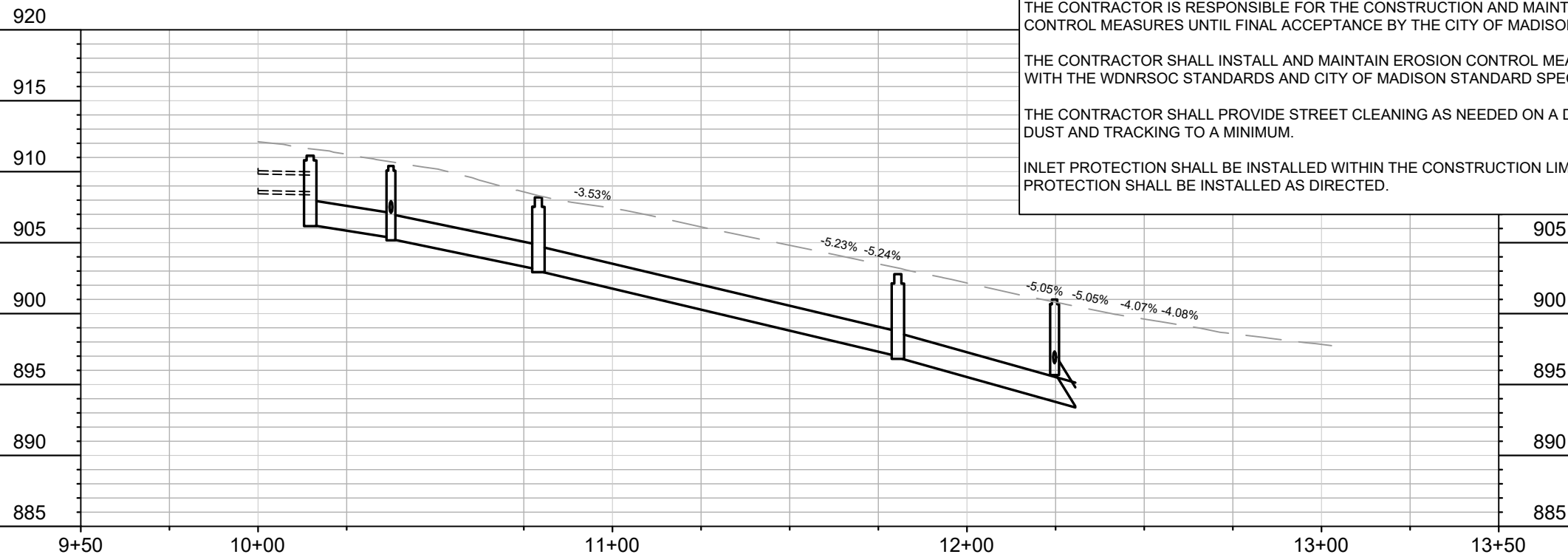
EROSION CONTROL MEASURES SHALL BE IN PLACE PRIOR TO ANY OTHER CONSTRUCTION ACTIVITY.

THE CONTRACTOR IS RESPONSIBLE FOR THE CONSTRUCTION AND MAINTENANCE OF ALL EROSION CONTROL MEASURES UNTIL FINAL ACCEPTANCE BY THE CITY OF MADISON.

THE CONTRACTOR SHALL INSTALL AND MAINTAIN EROSION CONTROL MEASURES IN ACCORDANCE WITH THE WDNR SOC STANDARDS AND CITY OF MADISON STANDARD SPECIFICATIONS.

THE CONTRACTOR SHALL PROVIDE STREET CLEANING AS NEEDED ON A DAILY BASIS TO KEEP DUST AND TRACKING TO A MINIMUM.

INLET PROTECTION SHALL BE INSTALLED WITHIN THE CONSTRUCTION LIMITS. ADDITIONAL INLET PROTECTION SHALL BE INSTALLED AS DIRECTED.



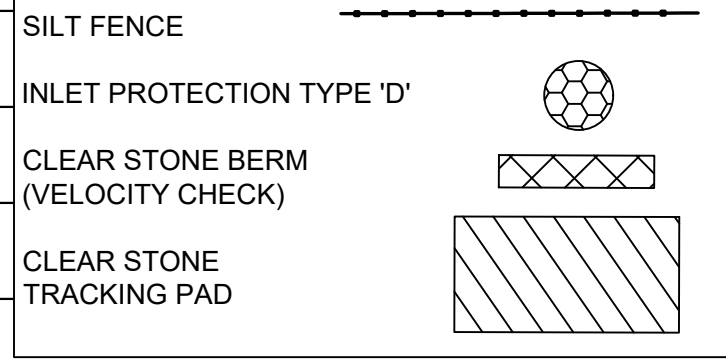
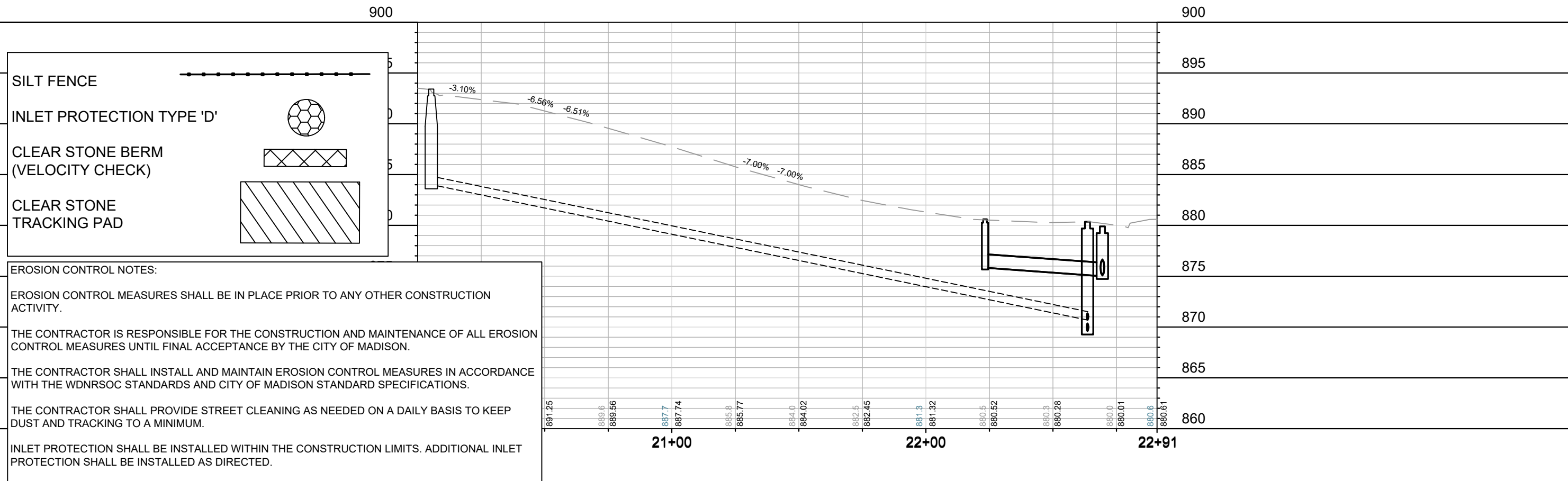
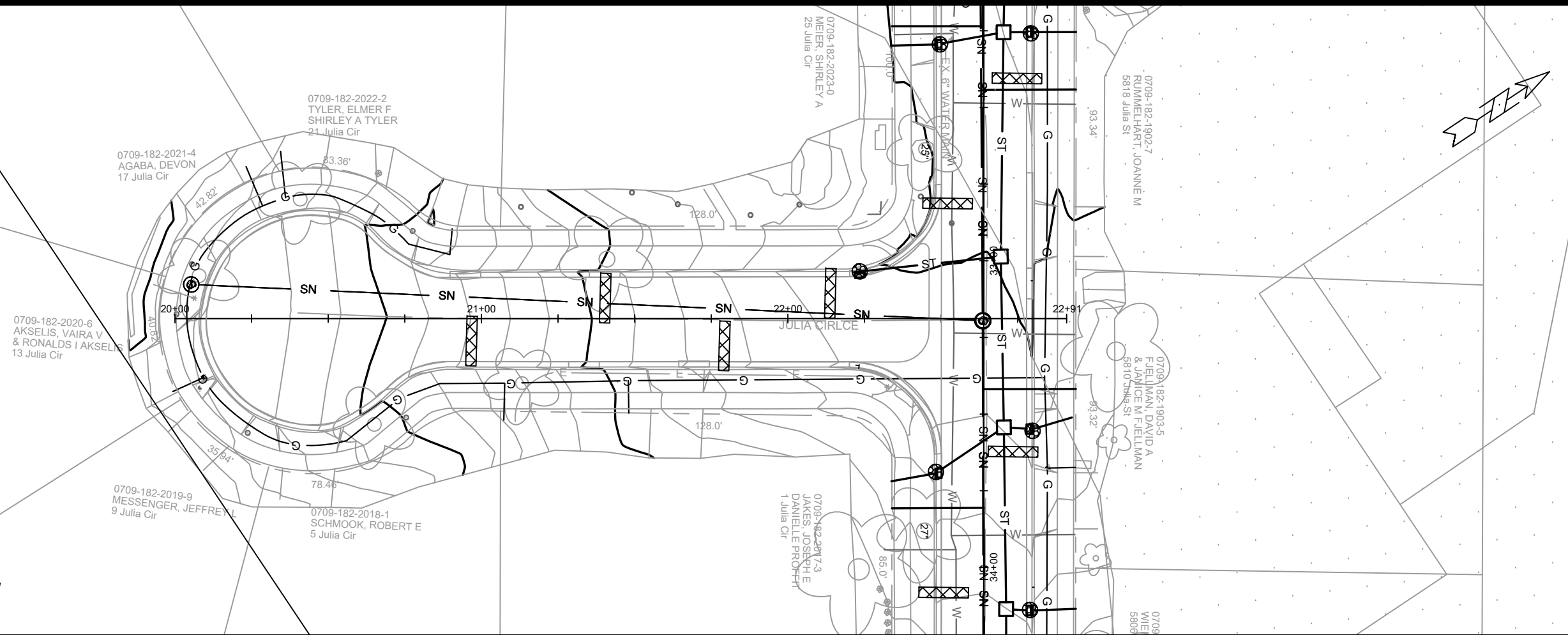
MARK	REVISION	DATE	BY
	REVISION 1	5/22/20	LAW
	REVISION 2	7/24/20	LAW

Designed By: LAW Date: 7/24/2020 12:05 PM Scale: 1" = 40'

12717  
 MADISON, WI  
 JULIA ST, JULIA CIR & BAKER AVE ASSESSMENT DISTRICT -2020  
 CONTRACT NO.: 8514



REV. 7/24/20 LW



**EROSION CONTROL NOTES:**

EROSION CONTROL MEASURES SHALL BE IN PLACE PRIOR TO ANY OTHER CONSTRUCTION ACTIVITY.

THE CONTRACTOR IS RESPONSIBLE FOR THE CONSTRUCTION AND MAINTENANCE OF ALL EROSION CONTROL MEASURES UNTIL FINAL ACCEPTANCE BY THE CITY OF MADISON.

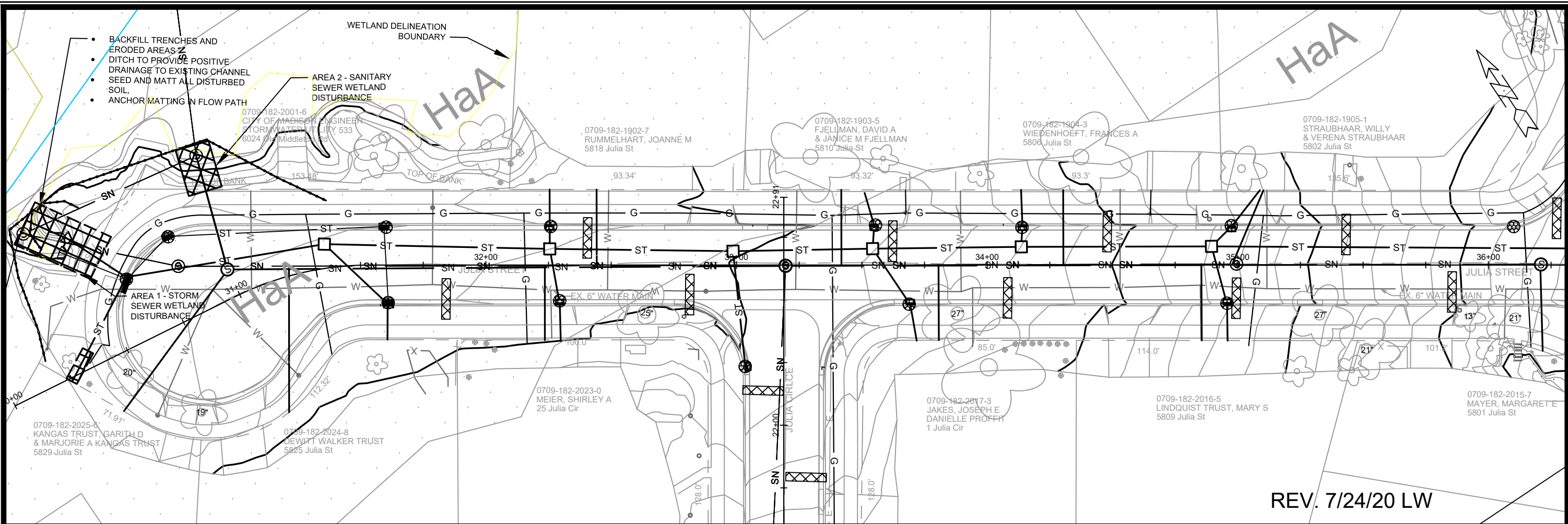
THE CONTRACTOR SHALL INSTALL AND MAINTAIN EROSION CONTROL MEASURES IN ACCORDANCE WITH THE WDNR SOC STANDARDS AND CITY OF MADISON STANDARD SPECIFICATIONS.

THE CONTRACTOR SHALL PROVIDE STREET CLEANING AS NEEDED ON A DAILY BASIS TO KEEP DUST AND TRACKING TO A MINIMUM.

INLET PROTECTION SHALL BE INSTALLED WITHIN THE CONSTRUCTION LIMITS. ADDITIONAL INLET PROTECTION SHALL BE INSTALLED AS DIRECTED.

12717	12717	12717
REVISION 2	REVISION 1	REVISION 1
7/24/20 LW	5/22/20 LAW	5/22/20 LAW
DATE	DATE	DATE
BY	BY	BY
Scale: 1" = 40'	Scale: 1" = 40'	Scale: 1" = 40'
Designed By: SMS	Date: 7/24/2020 12:06 PM	12717
12717	MADISON, WI	8514
EROSION CONTROL PLAN	JULIA ST, JULIA CIR & BAKER AVE ASSESSMENT DISTRICT -2020	CONTRACT NO:
M:\DESIGN\Projects\12717\CAD\Storm\12717\EC-LAYOUT-WETLAND GP.dwg		
12717	E-2	





REVISION 2	7/24/20	LAW	BY
REVISION 1	5/22/20	LAW	BY
MARK	DATE	DATE	BY
Designed By: SMS			Date: 7/24/2020 12:06 PM
12717			Scale: 1" = 40'

12717  
 MADISON, WI  
 CONTRACT NO.: 8514

REV. 7/24/20 LW

**EROSION CONTROL NOTES:**

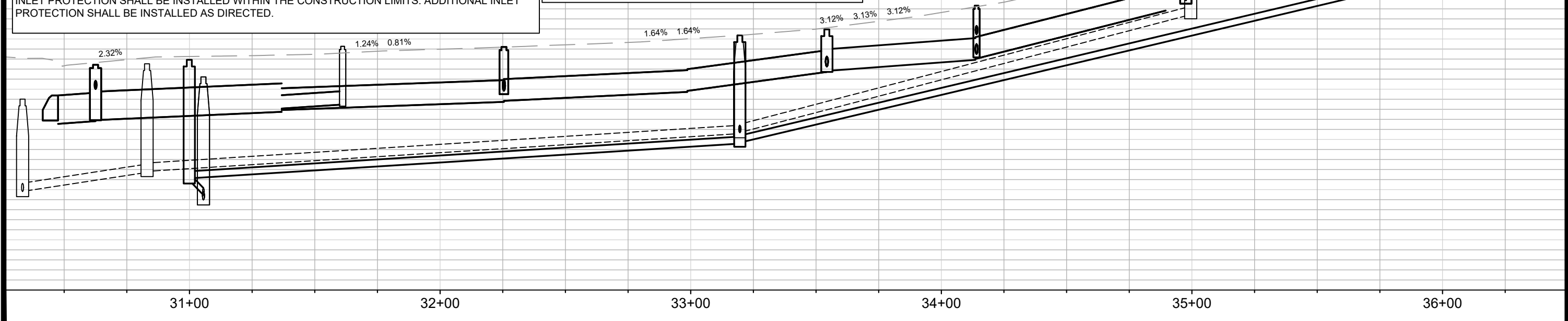
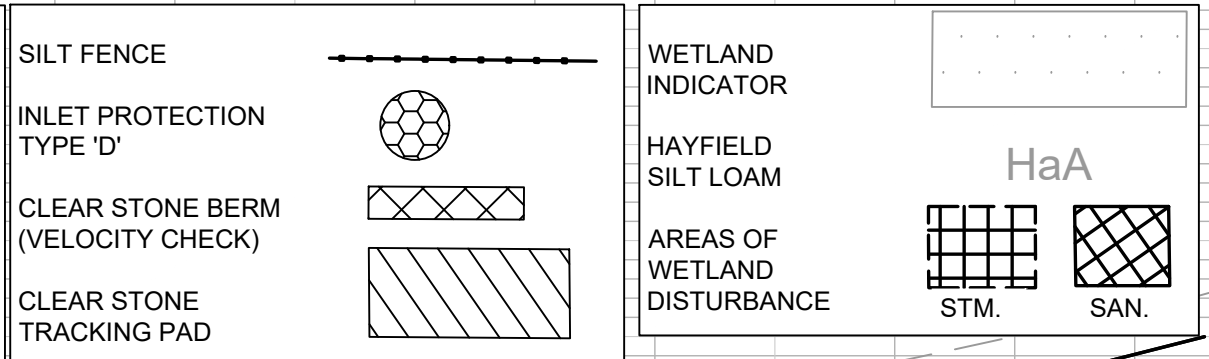
EROSION CONTROL MEASURES SHALL BE IN PLACE PRIOR TO ANY OTHER CONSTRUCTION ACTIVITY.

THE CONTRACTOR IS RESPONSIBLE FOR THE CONSTRUCTION AND MAINTENANCE OF ALL EROSION CONTROL MEASURES UNTIL FINAL ACCEPTANCE BY THE CITY OF MADISON.

THE CONTRACTOR SHALL INSTALL AND MAINTAIN EROSION CONTROL MEASURES IN ACCORDANCE WITH THE WDNR SOC STANDARDS AND CITY OF MADISON STANDARD SPECIFICATIONS.

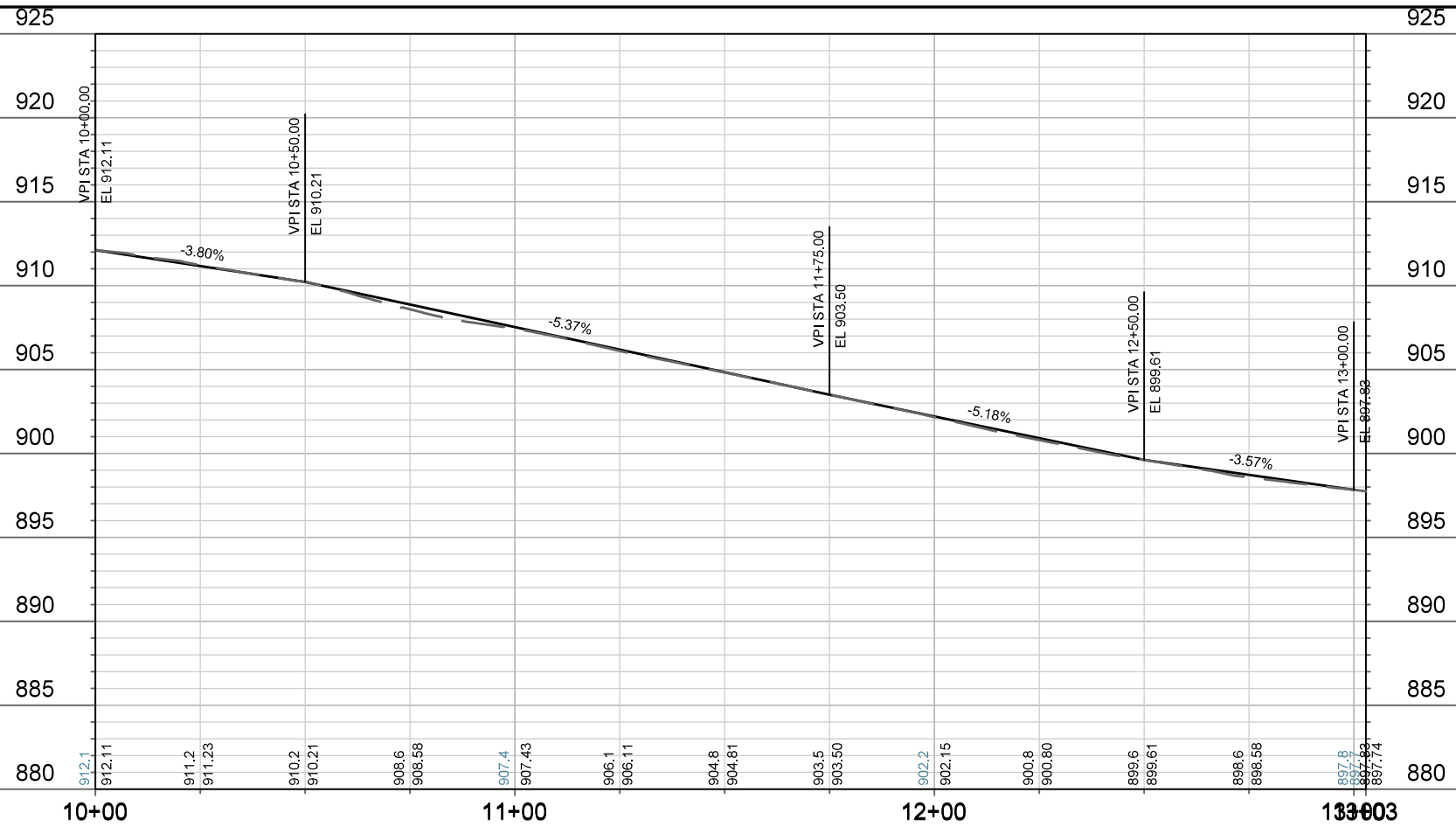
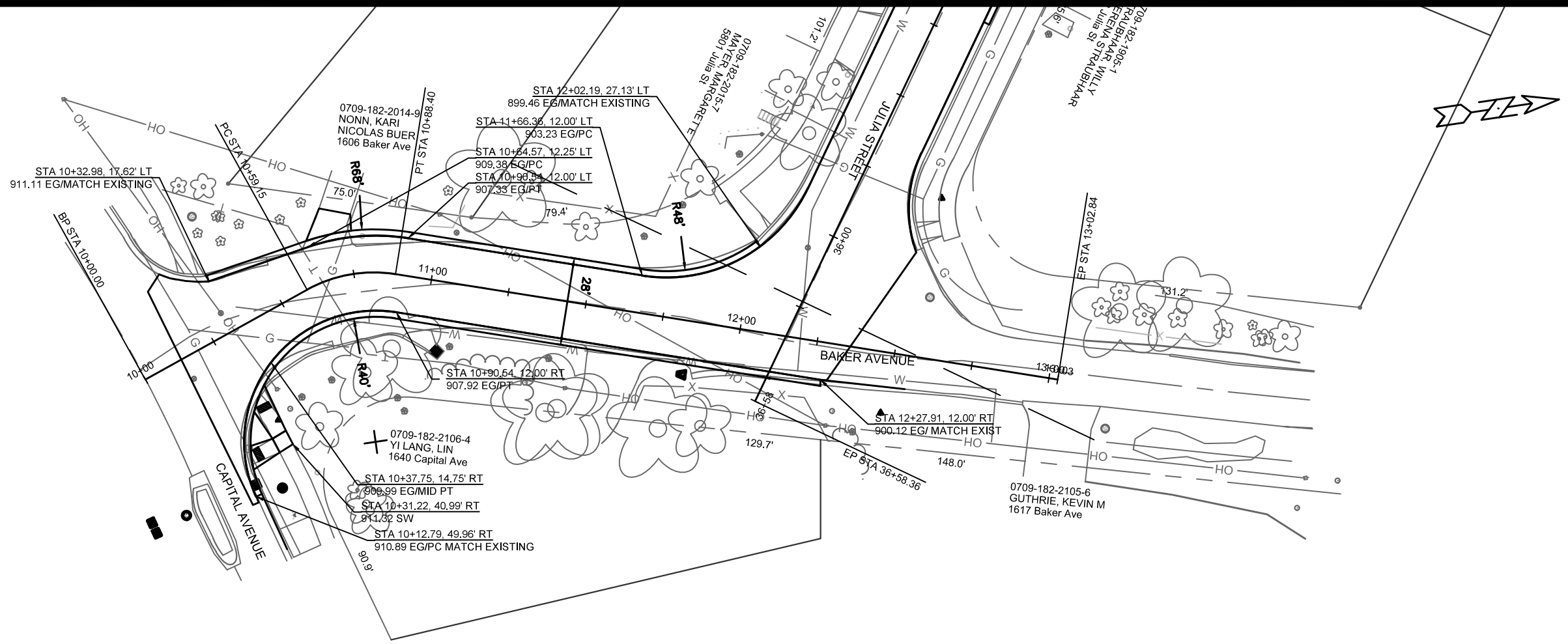
THE CONTRACTOR SHALL PROVIDE STREET CLEANING AS NEEDED ON A DAILY BASIS TO KEEP DUST AND TRACKING TO A MINIMUM.

INLET PROTECTION SHALL BE INSTALLED WITHIN THE CONSTRUCTION LIMITS. ADDITIONAL INLET PROTECTION SHALL BE INSTALLED AS DIRECTED.



IMPACTED WETLAND AREAS  
 JULIA ST, JULIA CIR & BAKER AVE ASSESSMENT DISTRICT -2020  
 M:\DESIGN\Projects\12717\CAD\Storm\12717TEC-LAYOUT-WETLAND GP.dwg





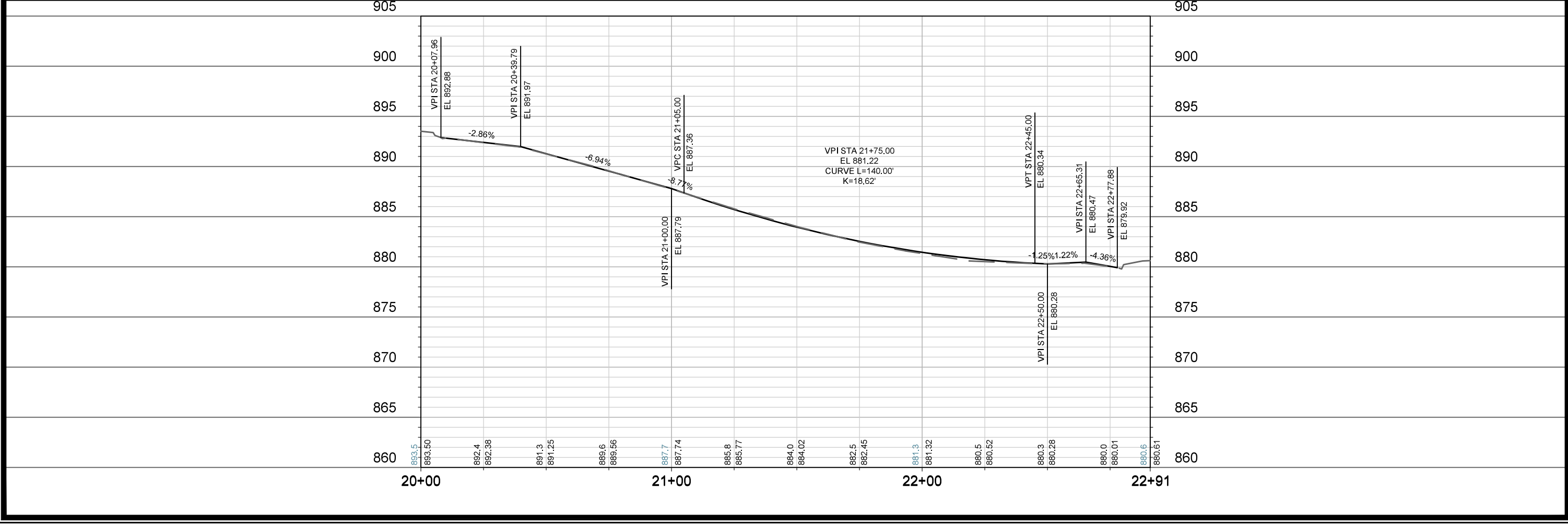
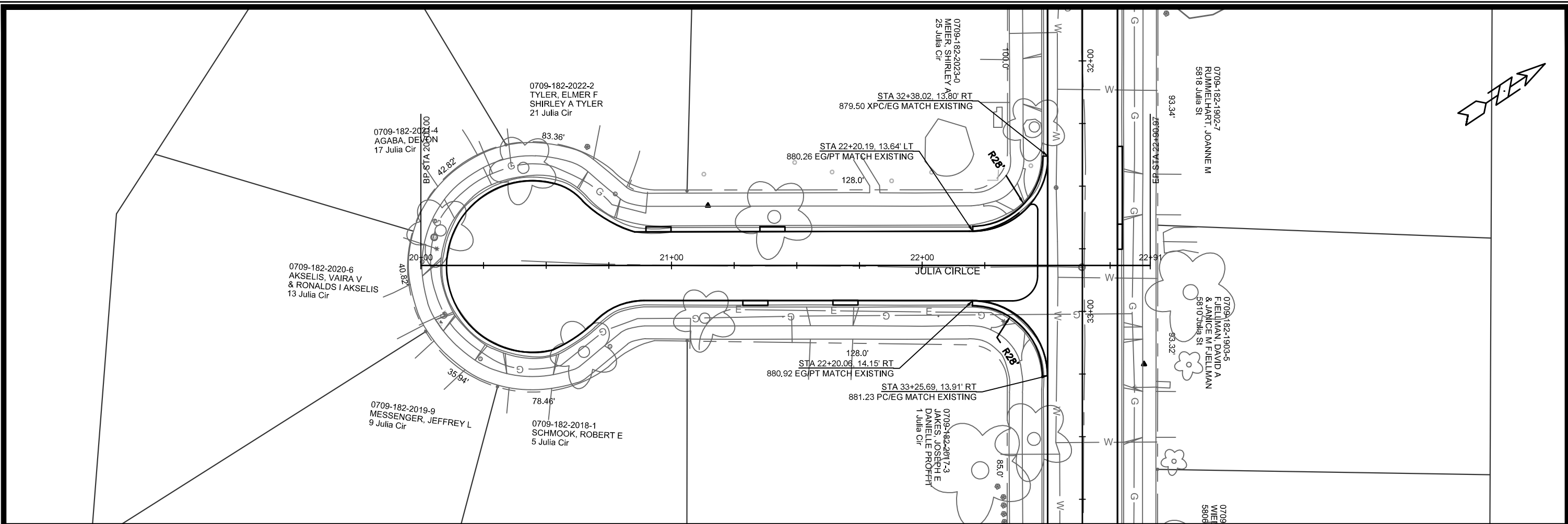
MARK	REVISION	DATE	BY

12717  
 MADISON, WI  
 CONTRACT NO: 8514

PLAN & PROFILE  
 JULIA ST, JULIA CIR & BAKER AVE ASSESSMENT DISTRICT -2020  
 M:\DESIGN\Projects\12717\CAD\Streets\12717EN-Streets\_plan and profile.dwg



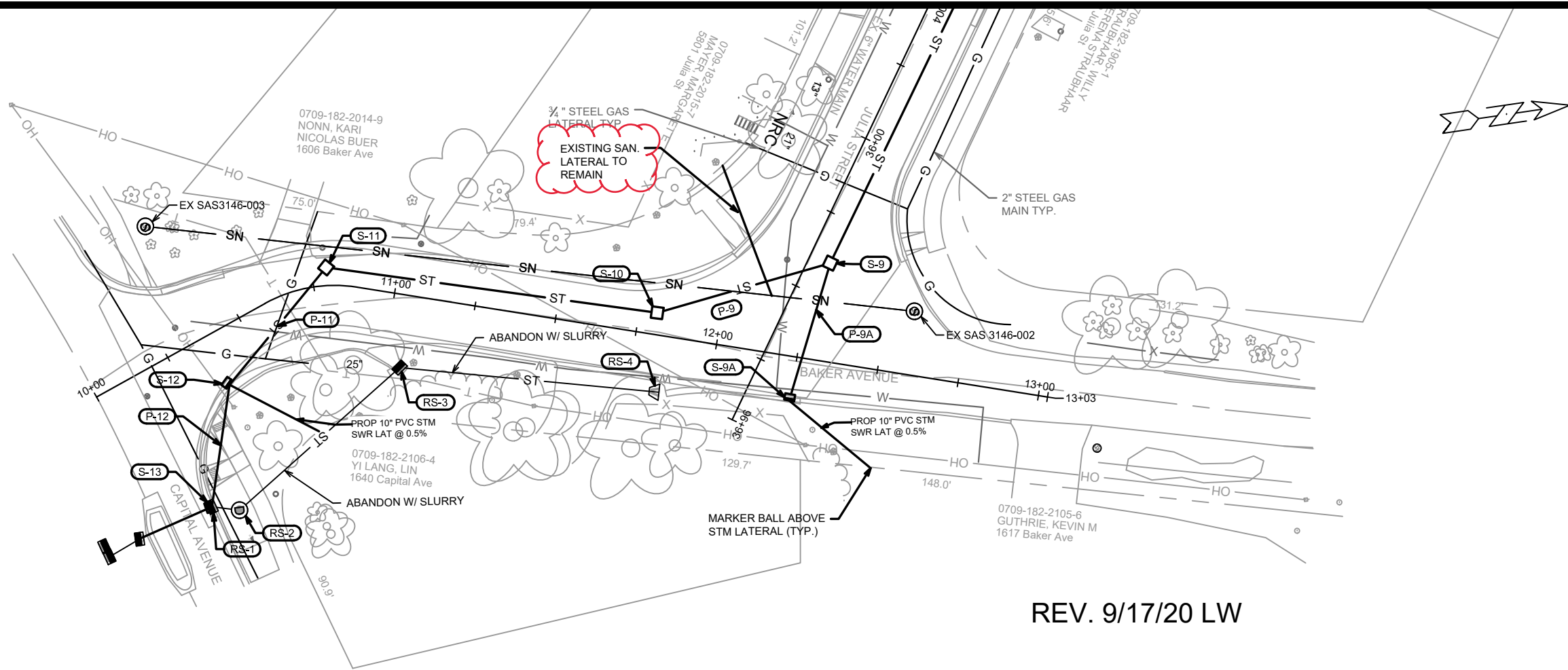
Scale: 1" = 40'  
 Date: 5/17/2020 8:36 AM  
 Designed By: ##  
 12717  
 P-1



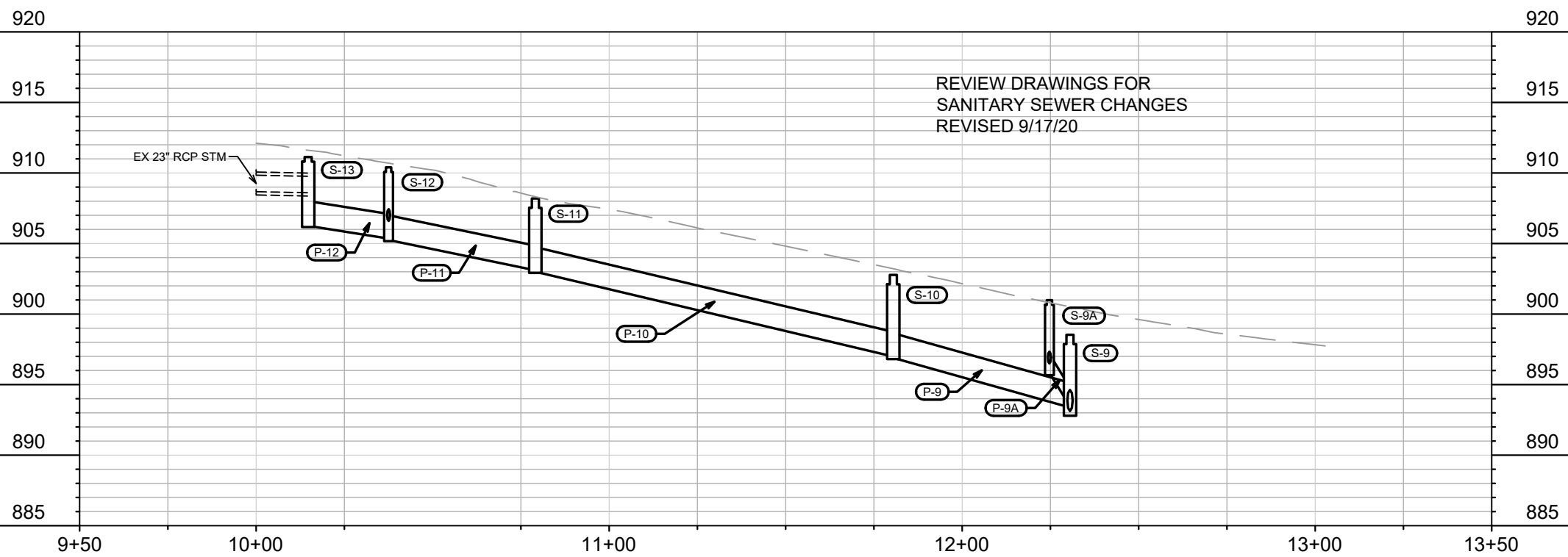
12717	MADISON, WI	CONTRACT NO: 8514	12717	P-2
PLAN & PROFILE JULIA ST, JULIA CIR & BAKER AVE ASSESSMENT DISTRICT -2020 M:\DESIGN\Projects\12717\CAD\Streets\12717EN-Streets_plan and profile.dwg				
12717 P-2				







REV. 9/17/20 LW



REVISION 3	LAW	9/17/20
REVISION 2	LAW	7/24/20
REVISION 1	LAW	5/22/20
MARK	DATE	BY
12717	Date: 9/17/2020 12:24 PM	Scale: 1" = 40'

12717  
 MADISON, WI  
 JULIA ST, JULIA CIR & BAKER AVE ASSESSMENT DISTRICT -2020  
 CONTRACT NO: 8514

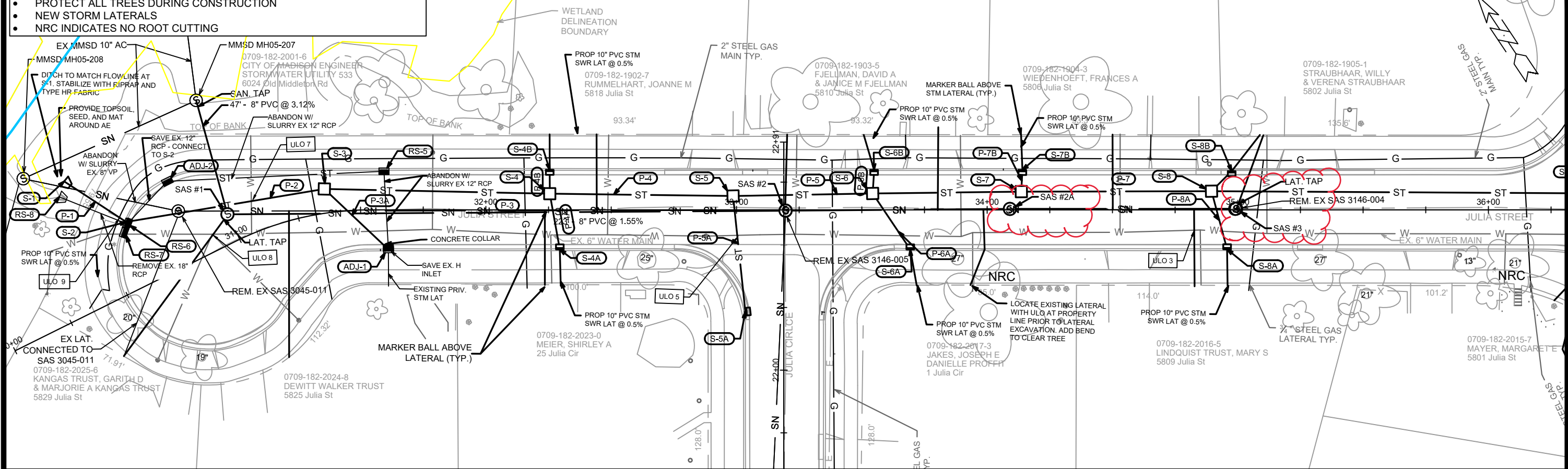


12717  
 U-1



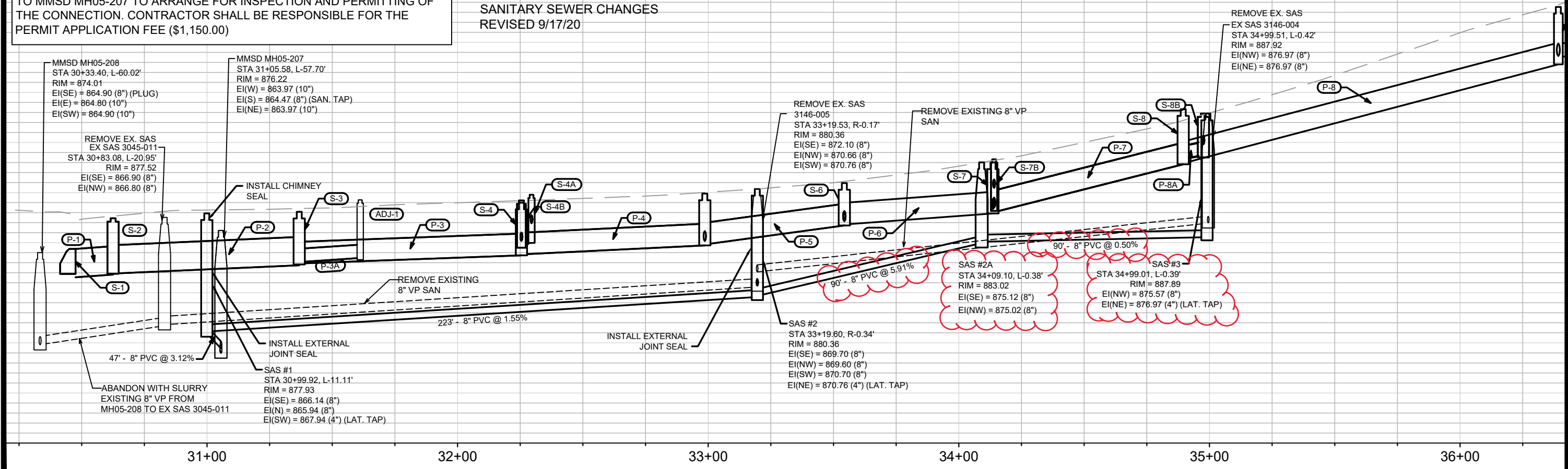
- GENERAL NOTES:**
- CONTRACTOR SHALL REM. & REP. SIDEWALK & CURB AS NEEDED FOR LATERALS (MAX OF 4 SQUARES SW & 20 FT CURB & GUTTER PER LAT.)
  - PROTECT ALL TREES DURING CONSTRUCTION
  - NEW STORM LATERALS
  - NRC INDICATES NO ROOT CUTTING

REV. 9/17/20 LW



NOTE: CONTRACTOR SHALL CONTACT RAY SCHNEIDER (608) 347-3628 OR RAYS@MADSEWER.ORG, FIVE DAYS PRIOR TO MAKING THE CONNECTION TO MMSD MH05-207 TO ARRANGE FOR INSPECTION AND PERMITTING OF THE CONNECTION. CONTRACTOR SHALL BE RESPONSIBLE FOR THE PERMIT APPLICATION FEE (\$1,150.00)

REVIEW DRAWINGS FOR SANITARY SEWER CHANGES REVISED 9/17/20



REVISION	DATE	BY
REVISION 3	9/17/20	LAW
REVISION 2	7/24/20	LAW
REVISION 1	5/22/20	LAW
MARK		BT

12717  
MADISON, WI  
CONTRACT NO: 8514

SEWER PLAN & PROFILE  
JULIA ST, JULIA CIR & BAKER AVE ASSESSMENT DISTRICT -2020  
M:\DESIGN\Projects\12717\CAD\Storm\12717SWR-Pipe Network - LAYOUT - REV 2.dwg



12717  
U-3

# SANITARY SEWER SCHEDULE

-REVISED 9/17/20 LW  
 -PLAN REVISION CHANGES INDICATED W/ ASTERISK & BOLD PRINT  
 -SAS #2A ADDED, SAS #3 LOCATION CHANGE, PIPE RUN CHANGES

JULIA ST/JULIA CIR./BAKER AVE.	SHEET NO.
PROJECT NO. 12717	U-4
SANITARY SEWER SCHEDULE	
CITY OF MADISON	

## PROPOSED SANITARY STRUCTURES

SAS NO.	STATION	LOCATION (OFFSET)	TOP OF CASTING	E.I.	DEPTH (FT)	NOTES
<b>STREET NAME</b>						
<b>JULIA STREET</b>						
SAS#1	30+99.92	LT-11.11	877.93	865.94	11.99	[1][2]
SAS#2	33+19.60	RT-0.34	880.36	869.60	10.76	[2]
<b>*SAS#2A</b>	<b>34+09.10</b>	<b>LT-0.38</b>	<b>883.02</b>	<b>875.02</b>	<b>8.00</b>	<b>[2]</b>
<b>*SAS#3</b>	<b>34+99.01</b>	<b>LT-0.39</b>	<b>887.89</b>	<b>875.57</b>	<b>12.32</b>	<b>[2]</b>

## PROPOSED SANITARY PIPES

FROM (DNSTM)	TO (UPSTM)	DWNSTRM E.I.	UPSTRM E.I.	PLAN LGTH (FT)	SLOPE (%)	PIPE SIZE	PVC TYPE	NOTES
EX. MH05-207	SAS#1	864.47	865.94	47	3.12%	8"	SDR-35	[3]
SAS#1	SAS#2	866.72	869.60	223	1.29%	8"	SDR-35	-
<b>*SAS#2</b>	<b>SAS#2A</b>	<b>869.70</b>	<b>875.02</b>	<b>90</b>	<b>5.91%</b>	<b>8"</b>	<b>SDR-35</b>	-
<b>*SAS#2A</b>	<b>SAS#3</b>	<b>875.12</b>	<b>875.57</b>	<b>90</b>	<b>0.50%</b>	<b>8"</b>	<b>SDR-35</b>	-

## SANITARY STRUCTURE REMOVALS

SAS NO.	STATION	LOCATION (OFFSET)	TOP OF CASTING	E.I.	DEPTH (FT)	NOTES
<b>STREET NAME</b>						
<b>JULIA STREET</b>						
EX SAS 3045-011	30+83.08	LT-20.95	877.52	866.80	10.72	-
EX SAS 3146-005	33+19.53	RT-0.17	880.36	870.66	9.70	-
EX SAS 3146-004	34+99.51	LT-0.42	887.92	882.51	5.41	-

## SANITARY PIPE REMOVALS

FROM (DNSTM)	TO (UPSTM)	PLAN LGTH (FT)	PAID (Y/N)	PLAN (PAY) LGTH (FT)	PIPE SIZE	PIPE TYPE	NOTES
EX. MH05-208	EX SAS 3045-011	63	Y	63	8"	VCP	ABANDON W/ SLURRY
EX SAS 3045-011	EX SAS 3146-005	242	N	0	8"	VCP	-
EX SAS 3146-005	EX SAS 3146-004	180	N	0	8"	VCP	-

### NOTES:

[1] INSTALL INTERNAL CHIMNEY SEAL IN ACCORDANCE WITH S.D.D. 5.7.17

[2] INSTALL EXTERNAL SEWER ACCESS STRUCTURE JOINT SEAL IN ACCORDANCE WITH S.D.D. 5.7.2

[3] CONTRACTOR SHALL NOTIFY RAY SCHNEIDER (608) 347-3628 OR RAYS@MADSEWER.ORG FIVE DAYS PRIOR TO MAKING THE CONNECTION TO EX. MMSD MH05-207 TO ARRANGE FOR INSPECTION AND PERMITTING. CONTRACTOR SHALL BE RESPONSIBLE FOR THE PERMIT APPLICATION FEE (\$1,150)



# STORM SEWER SCHEDULE

-REVISED 9/17/20 LW  
-PLAN REVISION CHANGES INDICATED W/ ASTERISK  
-REVIEW IE'S AT INLETS, PRIV STM LATERALS

## PROPOSED STORM STRUCTURES

STRUC. NO.	STATION	LOCATION (OFFSET)	TYPE	TOP OF CASTING	E.I.	DEPTH	NOTES
<b>STREET NAME</b>							
<b>JULIA STREET</b>							
S-1	30+47.55	LT-51.84	24" APRON END	874.38	-	-	w/ GATE [4]
S-2	30+62.54	LT-26.31	4x4 SAS	877.44	872.24	5.20	w/ R-3067-700VB (LP) [1] FP
S-3	31+36.81	LT-9.59	4x4 SAS	878.20	873.16	5.04	w/R-1550-0054 FP
S-4	32+25.48	LT-6.45	4x4 SAS	879.00	874.07	4.93	w/R-1550-0054
S-4A	32+29.50	RT-15.78	H INLET	879.78	875.31	4.47	w/ R-3067-7004v [1]
S-4B	32+25.46	LT-15.97	H INLET	879.27	874.84	4.43	w/ R-3067-7004v [1]
S-5	32+98.64	LT-5.53	4x4 SAS	879.90	875.06	4.84	w/R-1550-0054
S-6	33+54.32	LT-6.53	4x4 SAS	880.96	877.05	3.91	w/R-1550-0054
S-6A	33+69.34	RT-15.78	H INLET	881.99	878.50	3.49	w/ R-3067-7004v [1]
S-6B	33+54.91	LT-15.93	H INLET	881.22	877.67	3.55	w/ R-3067-7004v [1]
S-7	34+13.62	LT-7.27	4x4 SAS	883.01	878.25	4.76	w/R-1550-0054
S-7B	34+14.06	LT-15.93	H INLET	883.34	878.50	4.84	w/ R-3067-7004v [1]
S-8*	34+89.52	LT-7.44	4x4 SAS	<b>888.32</b>	883.16	5.16	w/R-1550-0054
S-8A	34+95.73	RT-15.71	H INLET	888.04	883.85	4.19	w/ R-3067-7004v [1]
S-8B*	<b>34+97.57</b>	<b>LT-15.45</b>	H INLET	887.88	883.85	4.03	w/ R-3067-7004v [1]
<b>JULIA CIRCLE</b>							
S-5A	22+23.23	LT-15.33	H INLET	880.60	876.00	4.60	w/ R-3067-7004v
<b>BAKER AVE</b>							
S-9A	12+24.71	RT-13.50	H INLET	900.99	896.00	4.99	w/ R-3067-7004v [1]
S-9	36+39.21	LT-6.59	3x3 SAS	898.53	893.13	5.40	w/R-1550-0054
S-10	11+80.50	LT-6.72	3x3 SAS	902.78	897.14	5.64	w/R-1550-0054
S-11	10+79.09	LT-5.60	3x3 SAS	908.19	903.25	4.94	w/R-1550-0054
S-12*	10+37.51	RT-16.50	H INLET	<b>910.40</b>	905.50	4.90	w/ R-3067-7004v [1]
S-13	10+14.73	RT-46.45	H INLET	911.13	906.50	4.63	w/ R-3067-7004v

## PROPOSED STORM PIPES

PIPE NO.	FROM (DNSTM)	TO (UPSTM)	DISCH. E.I.	INLET E.I.	PLAN (PAY) LGTH (FT)	PIPE LGTH (FT)	SLOPE	PIPE SIZE	TYPE	NOTES
P-1	S-1	S-2	871.96	872.24	29	27	1.02%	24"	RCP	
P-2	S-2	S-3	872.34	873.16	81	76	1.08%	24"	TYPE II STM	
P-3	S-3	S-4	873.26	874.07	90	85	0.95%	18"	TYPE II STM	
P-3A	S-3	ADJ-1	873.26	873.64	35	32	1.20%	12"	TYPE II STM	[2]
P-4	S-4	S-5	874.17	875.06	73	69	1.29%	18"	TYPE II STM	
<b>P-4A*</b>	S-4	S-4A	<b>874.50</b>	875.31	23	19	4.27%	12"	TYPE II STM	
<b>P-4B*</b>	S-4	S-4B	<b>874.50</b>	874.84	10	6	5.67%	12"	TYPE II STM	
<b>P-5*</b>	S-5	S-6	875.16	877.05	<b>56</b>	<b>52</b>	3.65%	18"	TYPE II STM	
<b>P-6*</b>	S-6	S-7	877.15	878.25	<b>59</b>	<b>55</b>	1.99%	18"	TYPE II STM	
<b>P-6A*</b>	S-6	S-6A	877.15	878.50	<b>27</b>	<b>23</b>	5.95%	12"	TYPE II STM	
<b>P-6B*</b>	<b>S-6</b>	<b>S-6B</b>	<b>877.15</b>	<b>877.67</b>	<b>9</b>	<b>6</b>	<b>8.70%</b>	<b>12"</b>	<b>TYPE II STM</b>	
P-7	S-7	S-8	878.35	883.16	76	72	6.71%	15"	TYPE II STM	
<b>P-7B*</b>	S-7	<b>S-7B</b>	878.35	<b>878.50</b>	<b>9</b>	<b>5</b>	2.89%	12"	TYPE II STM	
<b>P-8*</b>	S-8	S-9	883.26	893.13	150	146	6.76%	<b>18"</b>	TYPE II STM	
<b>P-8A*</b>	<b>S-8</b>	<b>S-8B</b>	<b>883.50</b>	<b>883.85</b>	<b>24</b>	<b>21</b>	<b>4.43%</b>	<b>12"</b>	<b>TYPE II STM</b>	
P-8B	S-8	S-8B	883.50	883.85	12	8	4.43%	12"	TYPE II STM	
<b>P-5A*</b>	S-5	S-6	875.16	877.05	<b>56</b>	<b>52</b>	3.65%	18"	TYPE II STM	
P-9	S-9	S-10	893.63	897.14	55	52	6.70%	15"	TYPE II STM	
P-9A	S-9	S-9A	893.63	896.00	45	41	5.72%	12"	TYPE II STM	
P-10	S-10	S-11	897.24	903.25	103	100	6.03%	15"	TYPE II STM	
P-11	S-11	S-12	903.35	905.50	47	44	4.93%	15"	TYPE II STM	
P-12	S-12	S-12	905.60	906.50	37	34	2.62%	15"	TYPE II STM	

## STORM STRUCTURE ADJUSTMENTS

STRUC. NO.	STATION	LOCATION (OFFSET)	TYPE	EX. TOC	PROP TOC	DIF. (FT)	NOTES
<b>JULIA STREET</b>							
ADJ-1	31+61.06	RT-15.15	INLET	878.64	878.64	0.00	[2][3]
ADJ-2	30+84.44	LT-33.57	INLET	874.91	874.91	0.00	[3][5]

## \*NEW PRIVATE STORM LATERALS

PROP. NO.	FROM (DNSTM)	DISCH. E.I.	SLOPE	PLAN (PAY) LGTH (FT)	PIPE LGTH (FT)	PIPE SIZE	PIPE TYPE	NOTES
<b>*5802 JUL. ST</b>	S-8B	<b>884.82</b>	0.50%	18	16	10"	Stm Pipe	
5809 JUL. ST	S-8A	885.24	0.50%	14	13	10"	Stm Pipe	
5806 JUL. ST	S-7B	880.55	0.50%	14	13	10"	Stm Pipe	
5810 JUL. ST	S-6B	877.93	0.50%	13	12	10"	Stm Pipe	
5818 JUL. ST	S-4B	875.18	0.50%	14	13	10"	Stm Pipe	
<b>*5829 JUL. ST</b>	<b>S-2</b>	<b>875.02</b>	<b>0.50%</b>	<b>47</b>	<b>45</b>	<b>10"</b>	<b>Stm Pipe</b>	PO OPT-OUT
1 JUL. CIR.	S-6A	878.93	0.50%	15	13	10"	Stm Pipe	
25 JUL. CIR.	S-4A	876.93	0.50%	15	13	10"	Stm Pipe	
1617 BAK. AVE.	S-9A	896.50	0.50%	32	31	10"	Stm Pipe	
<b>*1640 CAP. AVE.</b>	S-12	<b>906.60</b>	0.50%	31	30	10"	Stm Pipe	

## SPECIFIC NOTES:

- [1] EXTEND PRIVATE STORM SEWER LATERAL FROM STRUCTURE TO PROPERTY LINE
- [2] EXISTING STORM STRUCTURE TO BE CONNECTED TO NEW PIPE
- [3] PAID AS BID ITEM NUMBER 50499 (CONCRETE COLLAR)
- [4] 24" AE GRATE CONSTRUCTED & INSTALLED IN ACCORDANCE WITH S.D.D. 5.6.1
- [5] PROTECT EX. PIPE & STRUCTURE, RECONNECT TO NEW STRUCTURE S-2

## STANDARD NOTES:

- KOR N SEAL BOOTS OR EQUIVALENT SHALL BE USED FOR ALL PIPE CONNECTIONS TO INLETS. IN ADDITION, KOR N SEAL BOOTS SHALL BE REQUIRED FOR ANY TYPE II PIPE CONNECTION TO SAS STORM STRUCTURES. CONCRETE COLLARS OR KOR N SEAL MAY BE USED FOR RCP OR HERCP CONNECTIONS TO SAS STORM STRUCTURES.
- PLAN LENGTH (PAY LENGTH) IS FROM CENTER OF STRUCTURE TO CENTER OF STRUCTURE. PIPE LENGTH IS ACTUAL LENGTH OF PIPE FROM STRUCTURE WALL TO STRUCTURE WALL. SLOPE CALCULATED USING PIPE LENGTH.
- ALL REBAR FOR FIELD POURED STRUCTURES SHALL BE EPOXY COATED. ANY EXPOSED STEEL SHALL BE TOUCHED UP OR RECOATED
- ALL FIELD POURED (FP) SAS STORM STRUCTURES SHALL BE CONSTRUCTED IN ACCORDANCE WITH STANDARD DETAIL DRAWING 5.7.3. ALL PRECAST SAS STORM STRUCTURES SHALL BE CONSTRUCTED IN ACCORDANCE WITH STANDARD DETAIL DRAWING 5.7.5.

- APPROXIMATE DISCHARGE E.I. GIVEN, ADJUST E.I. AND PIPE SLOPE IN THE FIELD.
- TOP OF CASTING GRADE GIVEN IS THE TOP OF CURB FOR INLET STRUCTURES AND THE FLOWLINE OF THE CLOSED CASTING FOR SAS's.
- ALL REINFORCED CONCRETE PIPES TO BE CLASS III UNLESS OTHERWISE NOTED.
- SURVEYOR TO CONFIRM THAT ALL INLET STATION / OFFSETS LINE UP WITH PROPOSED CURB AND GUTTER.
- ALL STRUCTURES CALLED OUT AS FIELD POURED SHALL BE FIELD POURED. ALL OTHER STRUCTURES (NOT INDICATED AS FIELD POURED) SHALL BE SUBMITTED TO CITY ENGINEERING FOR APPROVAL IF PRECAST STRUCTURES ARE PREFERRED. CONTACT LUCAS WARDELL OF CITY ENGINEERING AT (608)243-5894 FOR PRECAST APPROVALS, FAX SHOP DRAWINGS TO (608)264-9275, OR EMAIL SHOP DRAWINGS TO LWARDELL@CITYOFMADISON.COM.

# STORM SEWER SCHEDULE

-PLAN REVISION CHANGES INDICATED W/ ASTERISK  
- REVIEW ULO'S FOR CHANGES (QUANTITY REDUCTION)

## STORM STRUCTURE REMOVALS

STRUC. ID NO.	STATION	LOCATION (OFFSET)	TOP OF CASTING	E.I.	DEPTH	NOTES
<b>JULIA STREET</b>						
RS-8	30+43.06	LT-47.13	873.91	873.91	0.00	-
RS-6	30+62.52	LT-25.45	877.37	874.32	3.05	-
RS-7	30+63.17	LT-27.52	877.41	874.32	3.09	-
RS-5	31+59.31	LT-15.41	877.93	875.87	2.06	-
<b>BAKER AVE</b>						
RS-1	10+14.54	RT-46.57	911.20	908.52	2.68	-
RS-2	10+21.51	RT-51.68	911.10	906.30	4.80	-
RS-3	11+05.11	RT-22.31	906.77	903.92	2.85	-
RS-4	11+84.86	RT-17.29	902.68	901.91	0.77	-

## STORM PIPE REMOVALS/ABANDONMENTS

FROM (DNSTM)	TO (UPSTM)	LENGTH (FT)	PAID (Y/N)	PLAN (PAY) LGTH (FT)	SIZE DIA (IN)	PIPE TYPE	NOTES
RS-9	RS-7		29 Y		29 18"	RCP	REMOVE STM PIPE
RS-7	RS-6		22 N		0 12"	RCP	REMOVE STM PIPE
ADJ-2	RS-5		87 Y		87 12"	RCP	ABAN W/ SLURRY
RS-5	ADJ-1		29 N		29 12"	RCP	ABAN W/ SLURRY
RS-2	RS-1		11 Y		11 14"x23"	HERCP	REMOVE STM PIPE
RS-3	RS-2		64 Y		64 12"	CMP	ABAN W/ SLURRY
RS-4	RS-3		78 Y		78 15"	RCP	ABAN W/ SLURRY

## UTILITY LINE OPENINGS

ULO NO.	STATION	LOCATION (OFFSET)	TYPE	TOP ELEV.	NOTES
<b>JULIA STREET</b>					
*ULO-1	36+48.68	RT-4.22	WATER	-----	REMOVED
*ULO-2	35+11.03	LT-0.71	WATER	-----	REMOVED
ULO 3	34+82.81	RT-8.66	WATER	-	-
*ULO-4	34+30.52	RT-8.94	WATER	-----	REMOVED
ULO 5	33+00.17	RT-10.22	WATER	-	-
*ULO-6	31+52.99	RT-8.60	WATER	-----	REMOVED
ULO 7	30+91.10	LT-6.64	WATER	-	-
ULO 8	31+09.90	LT-12.16	WATER	-	-
ULO 9	30+61.01	LT-29.02	GAS	-	-

\*5 ADDITIONAL UNDISTRIBUTED ULOs INCLUDED IN CONTRACT

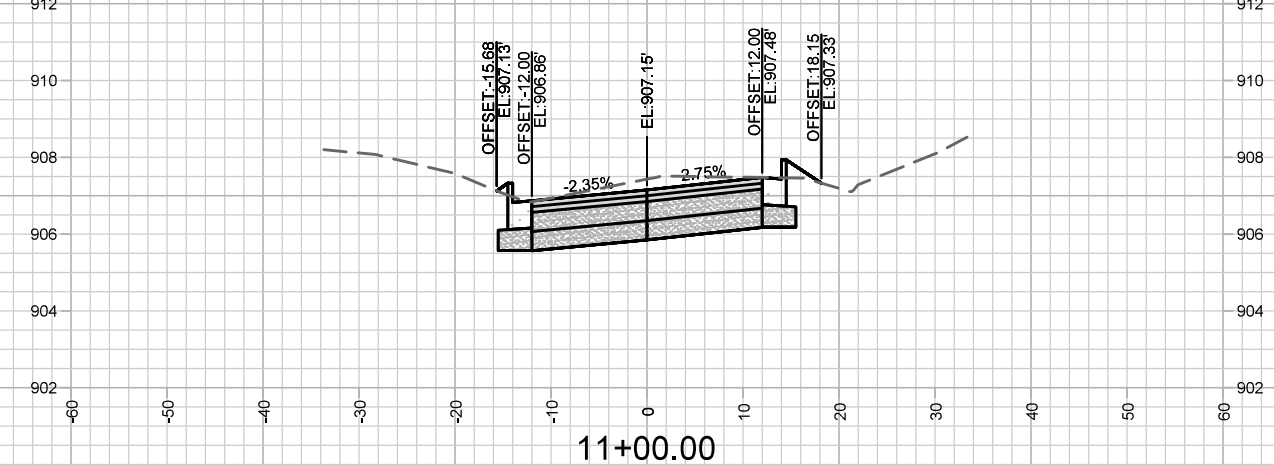
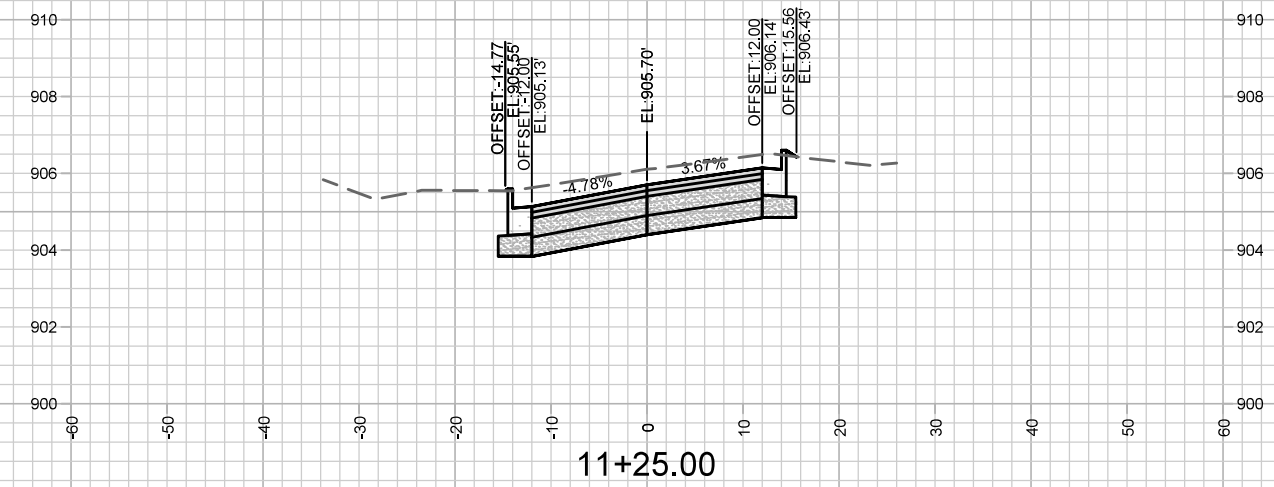
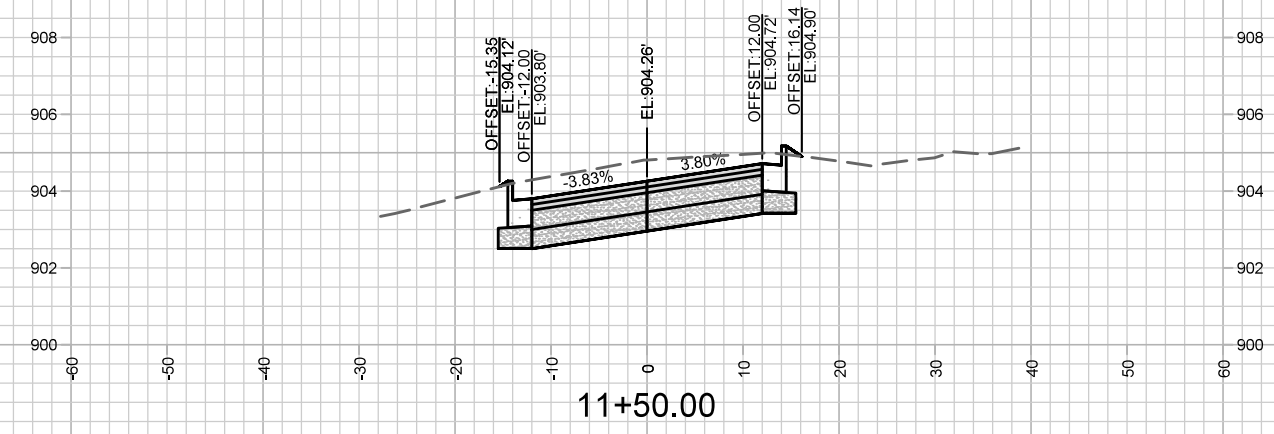
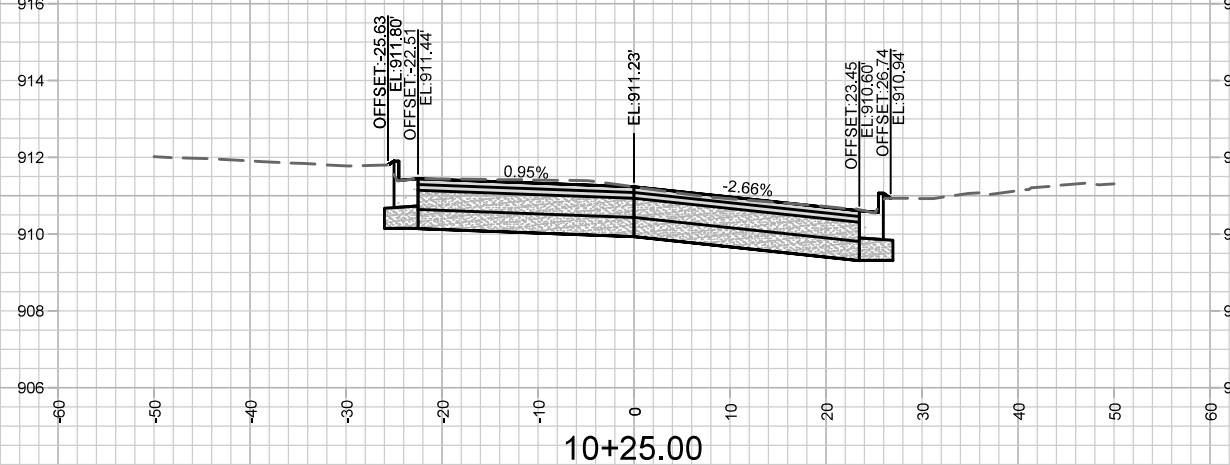
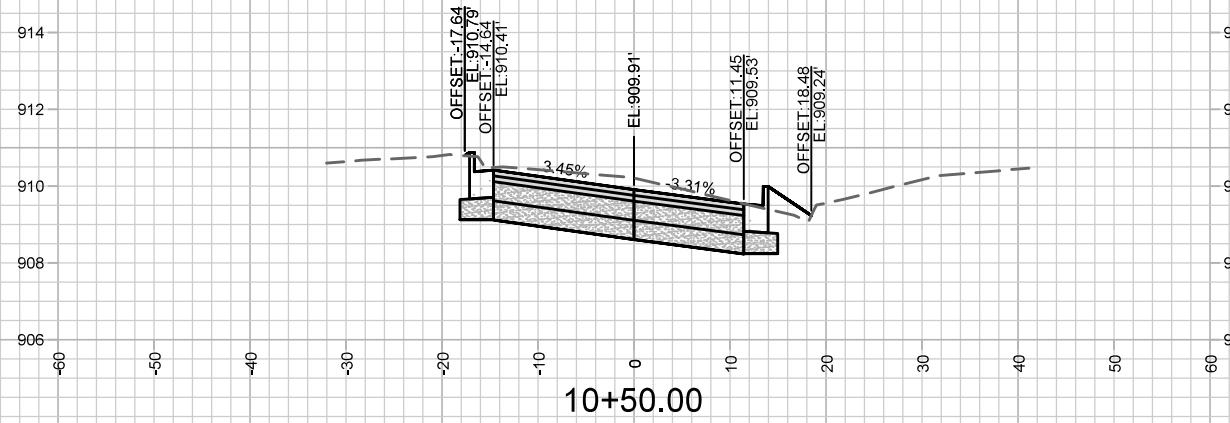
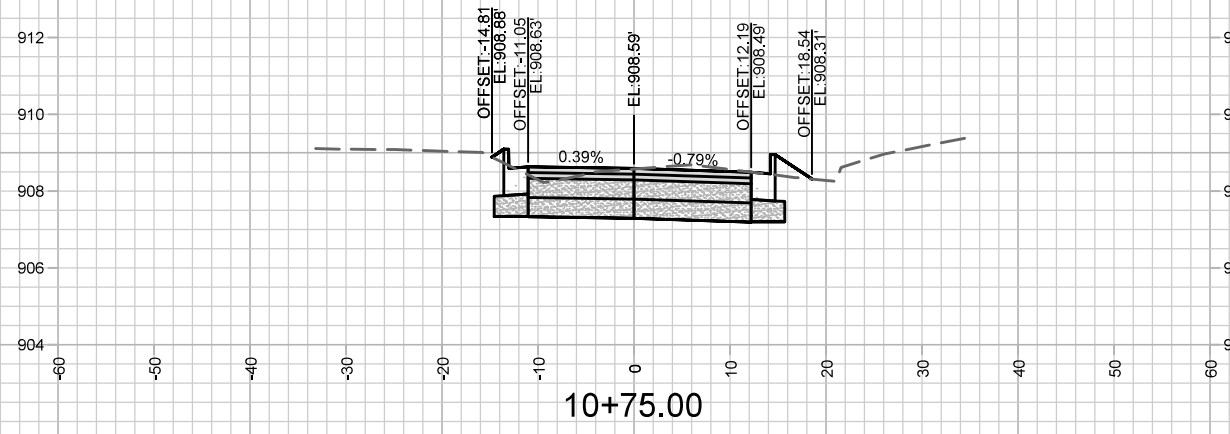
## SPECIFIC NOTES:

- [1] EXTEND PRIVATE STORM SEWER LATERAL FROM STRUCTURE TO PROPERTY LINE  
[2] EXISTING STORM STRUCTURE TO BE CONNECTED TO NEW PIPE

## STANDARD NOTES:

- PLAN LENGTH (PAY LENGTH) IS FROM CENTER OF STRUCTURE TO CENTER OF STRUCTURE. PIPE LENGTH IS ACTUAL LENGTH OF PIPE FROM STRUCTURE WALL TO STRUCTURE WALL. SLOPE CALCULATED USING PIPE LENGTH.  
-ALL REBAR FOR FIELD POURED STRUCTURES SHALL BE EPOXY COATED. ANY EXPOSED STEEL SHALL BE TOUCHED UP OR RECOATED PRIOR TO USE.  
-ALL FIELD POURED SAS STORM STRUCTURES SHALL BE CONSTRUCTED IN ACCORDANCE WITH STANDARD DETAIL DRAWING 5.7.3. ALL PRECAST SAS STORM STRUCTURES SHALL BE CONSTRUCTED IN ACCORDANCE WITH STANDARD DETAIL DRAWING 5.7.5.

- ABBREVIATIONS: AE = APRON ENDWALL; RCP = REINFORCED CONCRETE PIPE; HERCP = HORIZONTAL ELLIPTICAL REINFORCED CONCRETE PIPE; DNA = DOES NOT APPLY; SAS = SEWER ACCESS STRUCTURE; LP = LOW POINT INLET STRUCTURE; FP = FIELD POURED STRUCTURE; TR = TOP OF CONCRETE ROOF; NCM = NO CROWN MATCH FOR PIPES; UD = UNDERDRAIN  
- APPROXIMATE DISCHARGE E.I. GIVEN, ADJUST E.I. AND PIPE SLOPE IN THE FIELD.  
- TOP OF CASTING GRADE GIVEN IS THE TOP OF CURB FOR INLET STRUCTURES AND THE FLOWLINE OF THE CLOSED CASTING FOR SAS's.  
- ALL REINFORCED CONCRETE PIPES TO BE CLASS III UNLESS OTHERWISE NOTED.  
- SURVEYOR TO CONFIRM THAT ALL INLET STATION / OFFSETS LINE UP WITH PROPOSED CURB AND GUTTER.  
- ALL STRUCTURES CALLED OUT AS FIELD POURED SHALL BE FIELD POURED. ALL OTHER STRUCTURES (NOT INDICATED AS FIELD POURED) SHALL BE



MARK	REVISION	DATE	BY

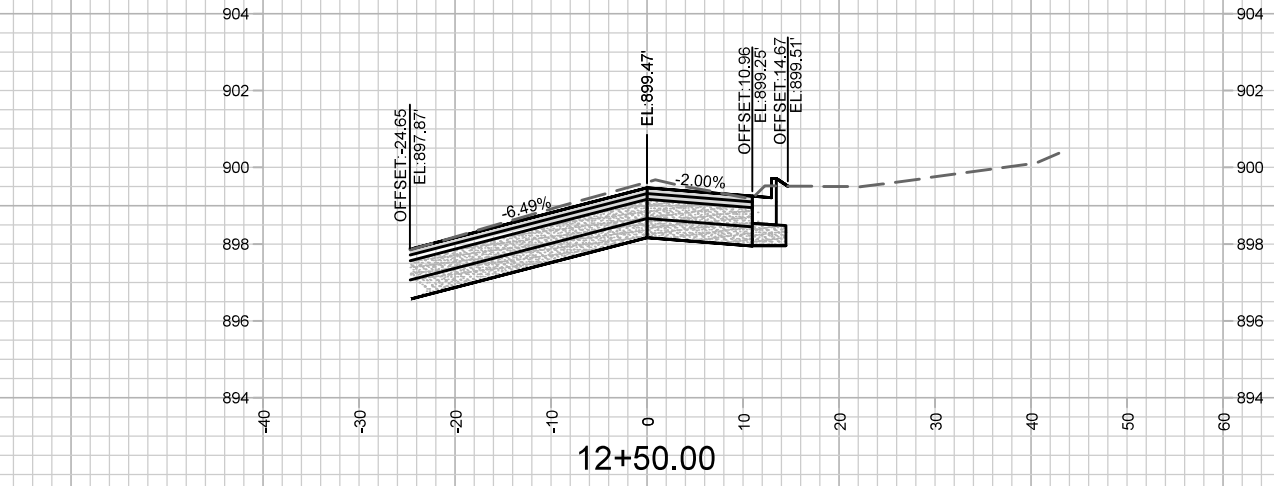
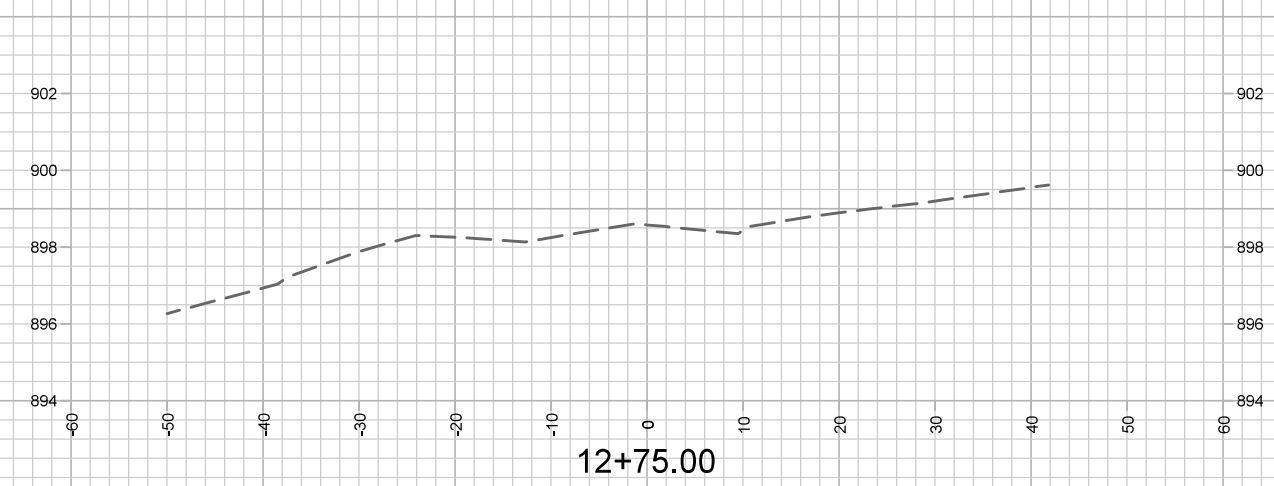
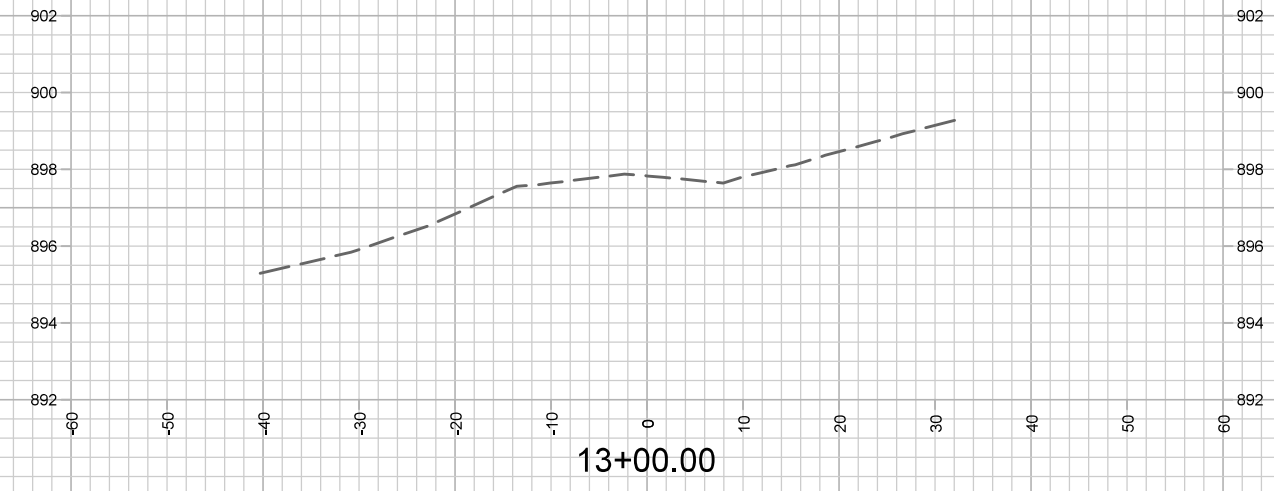
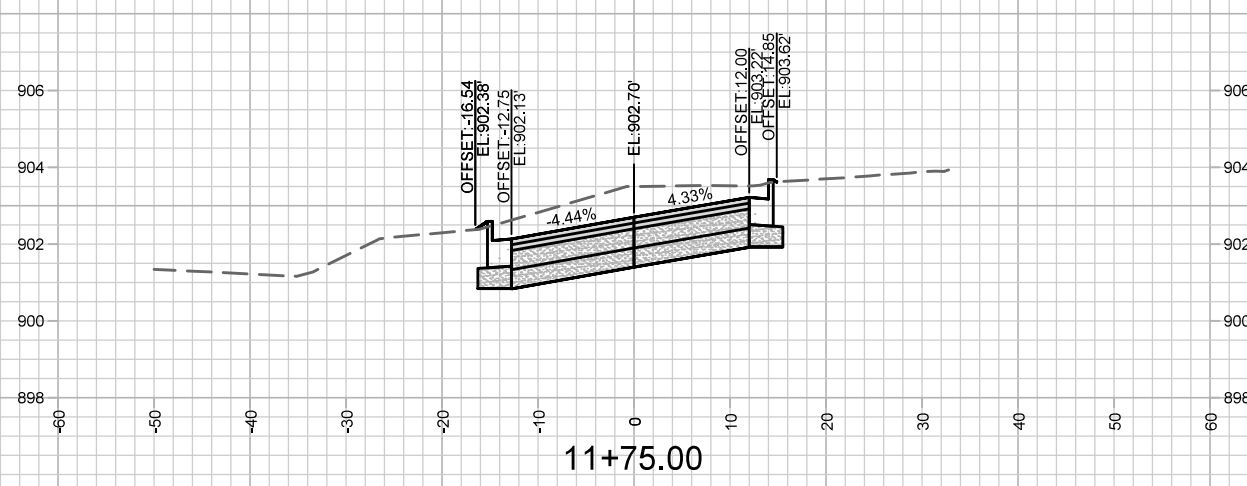
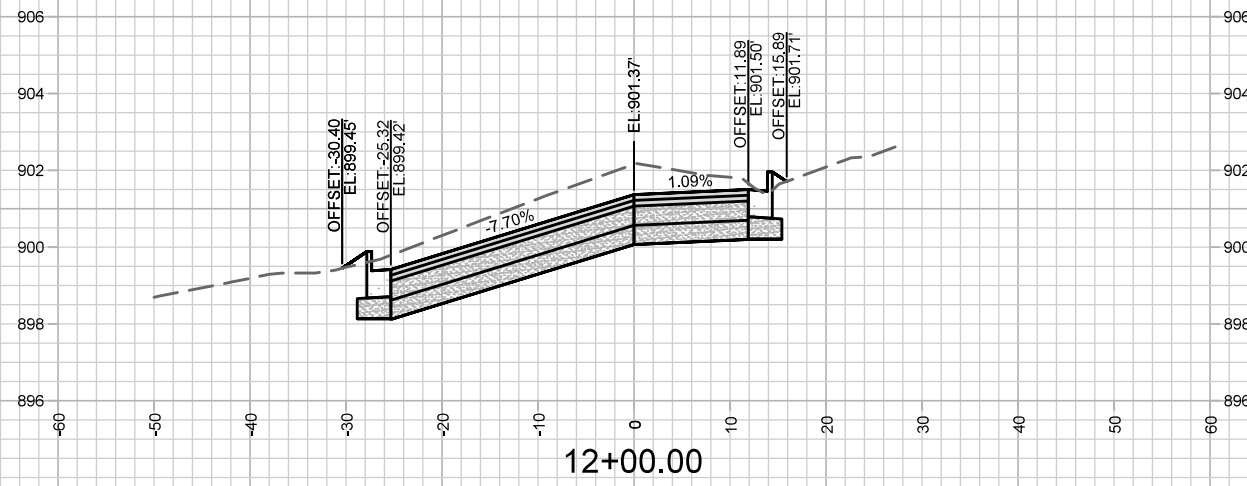
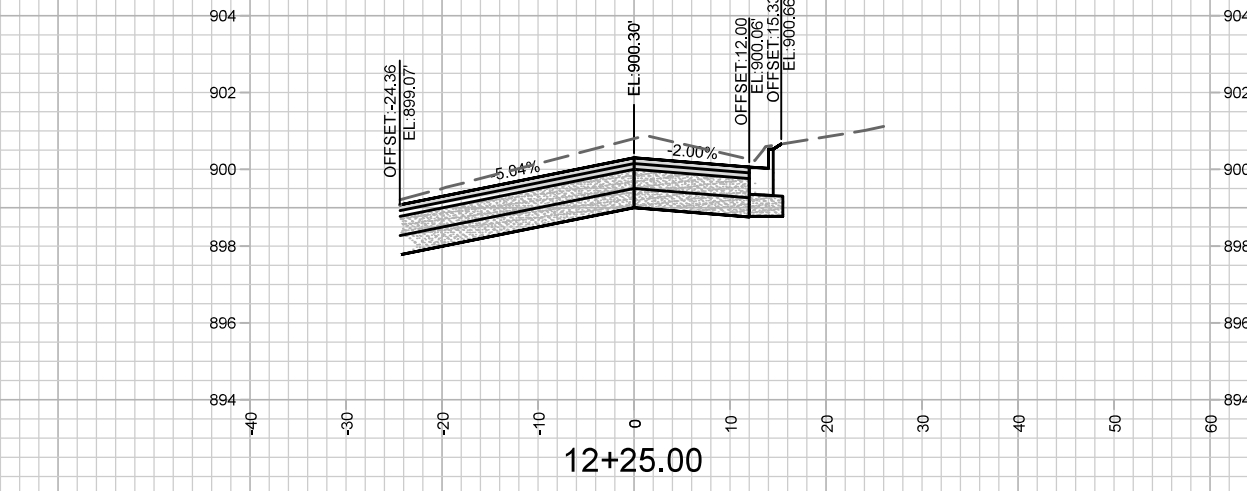
Designed By: SMS  
Date: 4/29/2020 11:36 AM  
Scale: 1" = 20'  
12717

12717  
MADISON, WI  
CONTRACT NO: 8514

X-1  
JULIA ST, JULIA CIR & BAKER AVE ASSESSMENT DISTRICT -2020  
M:\DESIGN\Projects\12717\CAD\Streets\12717EN-Streets\_Corridor.dwg



12717



MARK	REVISION	DATE	BY

12717  
 MADISON, WI  
 CONTRACT NO: 8514

JULIA ST, JULIA CIR & BAKER AVE ASSESSMENT DISTRICT -2020  
 M:\DESIGN\Projects\12717\CAD\Streets\12717EN-Streets\_Corridor.dwg



12717

---